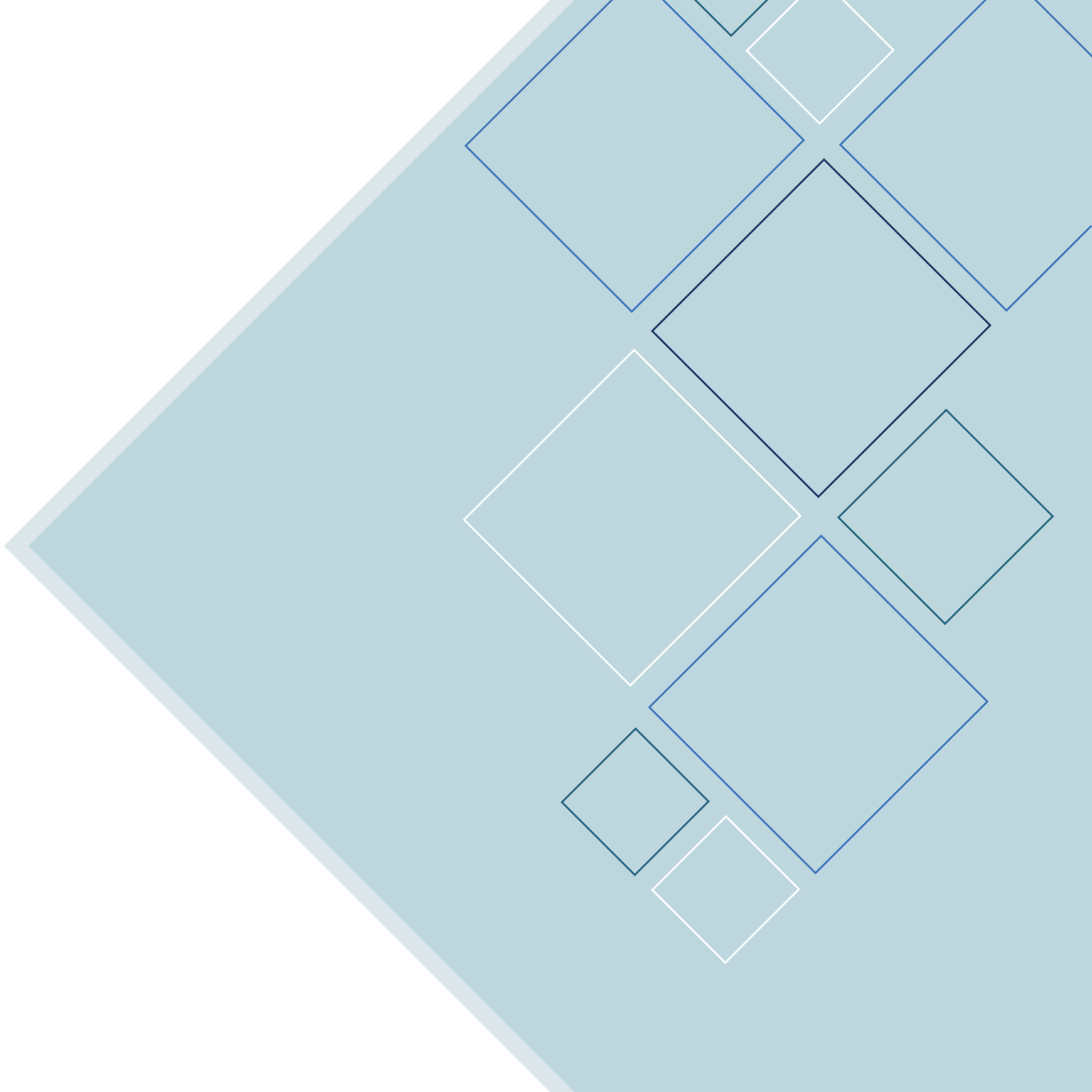


CORPORATE PROFILE







CONTENTS

◆ Corporate Philosophy	3
◆ About eX ² Technology, LLC	4
◆ Solutions	5
◆ Services	11

MISSION

We will design, build, operate and maintain smarter and more connected networks and systems bringing industry leading services to our customers. We will maintain a team of professionals with uncommon ambition and industry talent by fostering a culture of mutual trust and respect while encouraging personal creativity and innovation. We will distinguish ourselves through an unwavering commitment and drive for excellence.

CORE VALUES

COMMUNICATION | IMPROVEMENT | COMMITMENT | RELATIONSHIPS

Communicate honestly, proactively, openly and consistently.
Embrace change and strive for continuous improvement in all that we do.
Honor our commitments and agreements and expect the same.
Treat our business relationships with respect, professionalism, trust, courtesy and dignity.

GUIDING PRINCIPLES

We will provide a safe work environment that encourages personal and organizational success. We will support workplace unity, two-way feedback and teamwork. We will recognize the importance of balancing work and personal life, encourage innovative thinking and support an entrepreneurial spirit. Our working environment must be rewarding and genuinely enjoyable with safety at the forefront of everything we do.

About eX² Technology

eX² Technology was founded in 2015 by a team of seasoned communications and critical infrastructure professionals. For more than 25 years, eX² management team members have worked together designing, building, commercializing and maintaining some of our nation's largest and most complex communications and critical infrastructure systems. Together, they have more than 300 years of combined industry experience, designed, built and maintained more than 2M+ fiber miles and have accumulated \$340M+ in duct and dark fiber sales.

It was through these experiences that our founders recognized a noticeable gap between those needing better broadband services and the fiber optic design-build industry. After assembling a team of innovative, experienced and knowledgeable experts, our founders formed eX² Technology with a mission to transform the way the industry does business.

300+

YEARS COMBINED INDUSTRY EXPERIENCE

2M+

FIBER MILES DESIGNED, INSTALLED & MAINTAINED

\$340M+

IN CUMULATIVE DUCT & DARK FIBER SALES



We support network infrastructure development through innovation in project, technology and service using a single-source-solution approach – from the network design to the project financing. And, we offer the promise of transparency, honesty, integrity and, above all else, an excellent customer experience.

In 2019, eX² was acquired by Vivacity, LLC*, a smart infrastructure and asset development company, offering new funding avenues for smart infrastructure development.

**Vivacity, LLC is a wholly owned Columbia Capital entity. Since 1989, Columbia Capital has been investing in internet, enterprise IT and mobility infrastructure with over 175 companies funded and \$3.9B in funds raised.*

The eX² Difference

eX² Technology is a single source solution for those seeking to build, scale or future proof their communications infrastructure. We provide broadband, intelligent transportation, critical infrastructure and private network solutions and services with greater efficiency, less cost and a streamlined acquisition process.

INTELLIGENT TRANSPORTATION



PRIVATE NETWORKS



CRITICAL INFRASTRUCTURE




BROADBAND



At eX², we deliver EXCELLENCE IN EXECUTION[®], specializing in turnkey network design, build and maintain services, asset commercialization and unique project financing options.

We tailor our focus to your infrastructure goals and work strategically alongside you to develop a solution that's sure to have a positive and lasting impact on your community or organization. As your partner, we will walk you through all viable solutions and explain each in detail – the differentiators, the benefits and practical pricing and cost avoidance models.



Excellence is paramount to having an exceptional customer experience. To us, excellence is not merely a word. It's our way of doing business and our promise to you.

Solutions

BROADBAND

Bringing High-Speed Broadband Networks to Countless Communities

Strategically planning for and building a robust, scalable communications network is the first step to establishing a smarter, more connected community. These fiber, wireless and hybrid networks serve as the backbone to advance city services, streamline operations and are truly the best investment you can make in the sustainability and well being of your community or organization.

At eX², we will work alongside you to develop a solution that meets your current needs and serves as a building block for future technologies. And, because we know cost is always a consideration, we will help to identify new revenue streams and develop creative financing and revenue share plans to offer alternative ways to help offset network build costs.



ECONOMIC DEVELOPMENT



STREAMLINED TRANSPORTATION



IMPROVED PUBLIC SAFETY



ENRICHED EDUCATION



ADVANCED CITY SERVICES



SMART CITY APPLICATIONS

CRITICAL INFRASTRUCTURE NETWORKS

Smarter, more secure critical infrastructure

At eX², we design and deliver the next generation networks that drive our nation's largest – and securest – critical infrastructure systems. We understand the importance that redundancy, resiliency and long-term sustainability play in critical infrastructure operations. For more than two decades, our team members have been delivering large-scale, integrated communications systems that reduce costs, yet support safe and functioning facilities for our nation's most critical infrastructure.



SUPPORTS SMART UTILITY APPLICATIONS



OPTIMIZES SYSTEM PERFORMANCE, RELIABILITY AND AUTOMATION



SAFEGUARDS AGAINST GLOBAL THREATS AND HAZARDS



PROVIDES ASSET PROTECTION, INTRUSION DETECTION AND ACCESS CONTROL



SERVES AS PLATFORM FOR BRINGING BROADBAND TO COMMUNITIES



INTELLIGENT TRANSPORTATION SYSTEMS (ITS)

Delivering Smarter, More Efficient Intelligent Transportation Systems

For public transportation agencies, the safe movement of people, goods and data can offer a unique set of challenges. At eX² Technology, we understand these challenges and take pride in providing the technology and infrastructure necessary for smarter, more connected roadways.

We design and construct ITS and broadband infrastructure that support multiple use applications for streamlined traffic management, improved public safety, safeguarding of passengers and enhanced experiences for the traveling public and commercial vehicle operators.



STREAMLINED TRAFFIC
MANAGEMENT



IMMEDIATE EMERGENCY
NOTIFICATIONS



ENHANCED SYSTEM
INTEROPERABILITY



REDUCED TRUCK PARKING
CONCERNS



IMPROVED HIGHWAY SAFETY



SMARTER TRAVEL DECISIONS

PRIVATE NETWORKS

Providing Private Network Solutions For Increased Security, Reliability and Control

A private network solution may be the most beneficial and cost effective way to obtain fast, reliable and secure connectivity. We provide customized private network solutions for corporate, government, utility, transportation, education and healthcare agencies that best support their unique communications needs. With an individual average of 20+ years' experience, our team members design, deploy and maintain comprehensive fiber, wireless and hybrid network solutions that increase efficiency, reliability, security and network control.

Designed for improved interoperability, high availability and system redundancy, a private network can effectively reduce operational costs by eliminating carrier service fees and tariff lease lines.



Services

DESIGN-BUILD

eX² designs and builds outside and inside plant portions of a network infrastructure. Our services range from fiber and conduit deployment to complex component installation and equipment configuration to turn-up, testing and commissioning. We continually research and evaluate new technologies, processes and operations methods to deliver networks that serve as the platform for advancement, innovation and opportunity.

With ongoing customer communication throughout the project, we execute stringent quality assurance and quality control processes while delivering on-time and on-budget network installations.



ENGINEERING & CONSULTATION



PROJECT MANAGEMENT



OUTSIDE PLANT



INSIDE PLANT (ELECTRONICS)



PRODUCT SELECTION & DELIVERY



GIS & CAD DESIGN

OPERATIONS AND MAINTENANCE

Building and owning a fiber optic infrastructure will prove to be an asset to your community or organization. As such, it's critical to keep your network operating at its optimal level. We offer an annual maintenance and service program, assuming full responsibility for your network maintenance and operations. Our maintenance services encompass the physical outside plant infrastructure as well as the inside plant electronics.



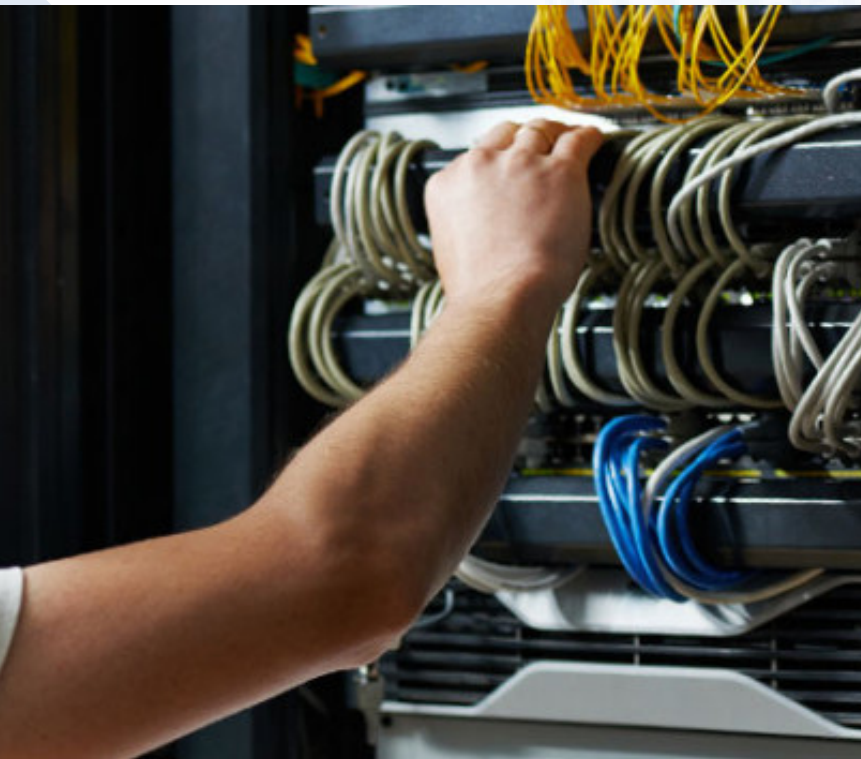
NETWORK
MAINTENANCE



NETWORK SUPPORT
SERVICES



NETWORK
MONITORING



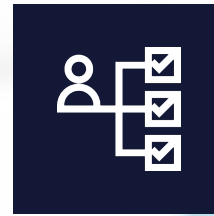
Our program ensures one entity is responsible for preventative maintenance, routine maintenance, moves/adds/changes, locating, entry and daily work on the system. This limits the risk to the infrastructure owner as one entity controls access and ensures standard operating procedures for work within the system.

PROFESSIONAL SERVICES

eX² provides a full suite of professional network infrastructure services to directly assist the customer, owner's project manager or project consulting firm during any stage of a project. From route analysis and feasibility studies to QA/QC inspections and utility locating, we are your one-stop-shop for all your network project needs.

We maintain a national team of industry leaders in communications and physical security design and maintenance, including:

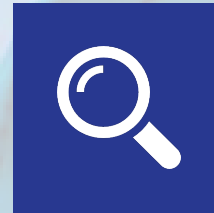
- ◆ Professional Engineers
- ◆ Certified Fiber to the Home Professionals
- ◆ Certified Fiber to the Home Designers
- ◆ BICSI Registered Communications Distribution Designers
- ◆ BICSI Fiber Optic Technicians
- ◆ Outside Plant Designers
- ◆ QA/QC Licensed Professionals
- ◆ Project Management Professionals
- ◆ Board Certified Attorneys & Public Accountants



NETWORK
ASSESSMENTS



ROUTE
ANALYSIS



NETWORK
AUDITS



QA/QC
INSPECTIONS



PERMITTING &
MAKE READY



LOCATING



NETWORK COMMERCIALIZATION & PROJECT FINANCING



Revenue Share



Asset Commercialization



Private Equity Investors

With decades of industry experience, we know the first major challenge in beginning any network infrastructure project is determining project costs and securing appropriate funding. Whether its offering extended payment terms, revenue share options, building and marketing excess fiber capacity or finding a strategic partner to share the financial burden, we can design and build your network and provide flexible payment options to get your project started, completed and everything in between.

With a robust network of vendors, partners and industry experts, we have significant experience

in network asset commercialization, right of way development and helping establish contractual language to protect the network owner's interest. Using this approach, our team members have secured more than \$340M in Indefeasible Right of Use agreements, generating millions of dollars to offset all or most network build costs.

At eX², WE WILL BRING THE TEAM, THE PARTNERS AND THE NECESSARY THIRD PARTIES TOGETHER TO TRANSFORM YOUR INFRASTRUCTURE INTO A FUTURE-READY NETWORK ASSET.



DUCT & DARK FIBER COMMERCIALIZATION



P3 & ROW DEVELOPMENT




MARKET ANALYSIS




PRIVATE EQUITY INVESTORS



GRANT & FUNDING REQUEST SUPPORT



 1044 North 115th Street, Suite 200
Omaha, Nebraska 68154

 402.817.7970

 info@ex2technology.com

 www.ex2technology.com